

PhenoDrive:

A New Class of Synthetic Biomimetic Basement Membranes.

PhenoDrive is a new class of synthetic biomaterials which enables clinically-reflective and application-driven culture of a range of cell phenotypes.



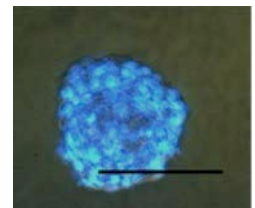
PhenoDrive substrates facilitates the culture and testing of relevant cell phenotypes in the form of spheroids and/or co-culture models, which closely simulate tissue microenvironments (e.g. stem cell niche, epithelia, cancer mass, hepatocytes spheroids, hypoxic environments). The PhenoDrive biomimetic basement membranes (BM) can be adapted to both 2D and 3D culture conditions and may be applied most commonly used plasticware including 96- and 24-well plates, T-flasks, transwell's, chamber slides and 3D scaffolds

PhenoDrive mimics the mesh-like structure of the Collagen Type IV and many typical bioligands present in the BM and is composed of hyperbranched polylysine molecules presenting laminin-mimicking bioligands (e.g. YIGSR and IKVAV sequences) and cell adhesion bioligands (e.g. RGD). PhenoDrive's hyperbranched structure allows the ordered presentation of these relevant cell-binding molecules at high density. The mesh like structure of these substrates are also supplied combined with other types of macromolecules including:

- (i) Carboxybetaine a glycocalyx-binding moiety.
- (ii) Phosphoserine a biomineralization template.
- (iii) Quinolone an oxygen consuming moiety.

- Culture adult or embryonic stem cells as spheroids with preserved progenitor phenotype in a controlled and reproducible way.
- Chemically defined, animal component free extracellular matrix analogues
- User friendly, supplied as a readily reconstituted dry powder to coat standard tissue culture plastic ware
- Available with a wide range of surface functionalization options
- Compatible with standard microscopic/imaging techniques and regular fixation and staining protocols
- Gamma and UV stable.

PhenoDrive substrates are recommended for the culture of adult and embryonic stem cells to facilitate their organisation into spheroids with preserved progenitor phenotype in a controlled and reproducible way.



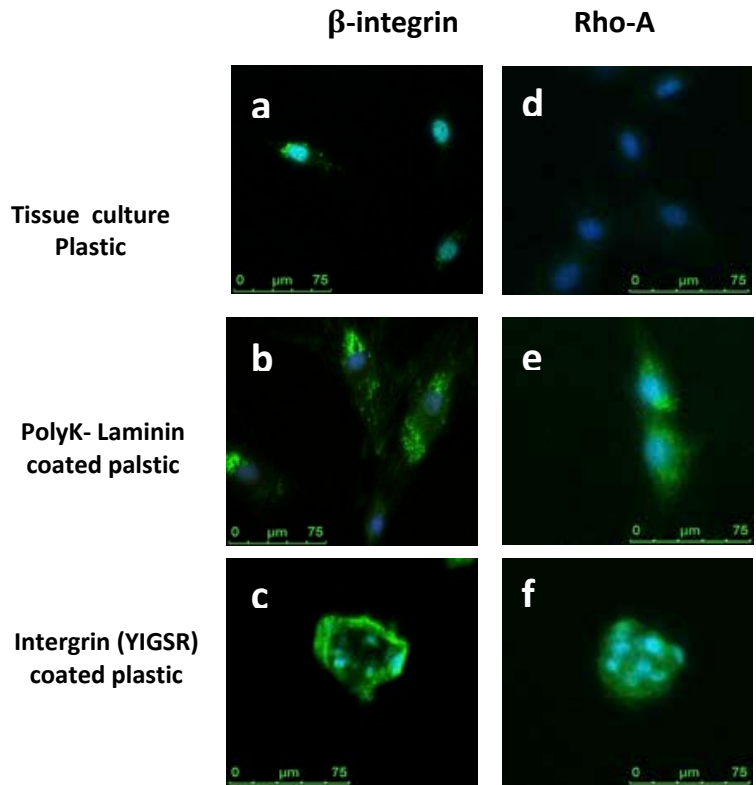
Typical adult stem cell spheroid formed on PhenoDrive. Blue staining shows cell nuclei. Scale Bar =100 μ m.

PhenoDrive substrates also provide a BM biomimicking role for the culture of other types of cells including endothelial, epithelial, glial and neuronal cells.

PhenoDrives are user-friendly, covalently grafted on to linear poly-L-(lysine) they are provided as lyophilized powder which is readily reconstituted in ethanol (or aqueous media) to coat tissue culture plastic ware, 3D scaffolds and Transwell polycarbonate membranes by a rapid and simple casting procedure. The PhenoDrive substrates are gamma- and UV stable and do not alter the optical properties of plastic ware or glassware or the physicochemical properties of 3D scaffolds.

PhenoDrive: A New Class of Synthetic Biomimetic Basement Membranes.

	Integrin YIGSR	Integrin IKVAC	Integrin RGD	Universal	Phosphoserine	Quinolone
Stem Cells	*			*		
Endothelial Cells	*					
Neural cells		*				
Epithelial Cells	*		*			
Osteoblasts			*		*	
Chondrocytes				*		*
Haepatocytes				*		*
Cancer cells				*		*



Expression of β -integrin and Rho Factor in 3D stem cell spheroids. Green staining shows the expression and localization of the markers, blue staining identifies nuclei. In figure c the localization of the integrin's in the cells at the spheroid periphery is evident. In figure f the HIF-alpha factor is well expressed in the spheroid core indicating cell hypoxic conditions.

Less organised and limited expression is observed in stem cells growing on laminin and non coated tissue culture plastic substrates. Cell nuclei are stained by DAPI.

PhenoDrive:

A New Class of Synthetic Biomimetic Basement Membranes.

Ordering information

	Catalogue Number
PhenoDrive – Universal 1 mg/vial	XXXXXX
PhenoDrive – Universal 5 x 1 mg/vial	XXXXXX
PhenoDrive – Integrin (YIGSR) 1 mg/vial	XXXXXX
PhenoDrive – Integrin (YIGSR) 5 x 1 mg/vial	XXXXXX
PhenoDrive – Integrin (IKVAD) 1 mg/vial	XXXXXX
PhenoDrive – Integrin (IKVAD) 5 x 1 mg/vial	XXXXXX
PhenoDrive – Integrin (RGD) 1 mg/vial	XXXXXX
PhenoDrive – Integrin (RGD) 5 x 1 mg/vial	XXXXXX
PhenoDrive – Phosphoserine 1 mg/vial	XXXXXX
PhenoDrive – Phosphoserine 5 x 1 mg/vial	XXXXXX
PhenoDrive – Quinolone 1 mg/vial	XXXXXX
PhenoDrive – Quinolone 5 x 1 mg/vial	XXXXXX

1 x vial is sufficient to coat 1 x 96 well plate.
(substrate concentration 0.1mg/ml, 50µl per well)

Intended use

Coating of tissue culture plastic ware,
Glassware and scaffolds

PhenoDrive substrates were developed by and are
manufactured by Tissue Click Ltd

PhenoDrive, Trade mark applied for.

Tissue Click™ is a registered Trade Mark.